



# GIS Info by County

GIS information is available for some Michigan Counties. This document contains links to those sites to help with locating parcels or addresses.

Counties	Notes
<i>Alcona</i>	Call: 989.724.9430
<a href="#"><u>Alger</u></a>	See <a href="#"><u>Colligo</u></a> instructions
<a href="#"><u>Allegan</u></a>	Google 'Allegan County GIS' Click on the first link 'Allegan County Parcel Viewer 2.0' Use 'Parcel Search by:'
<i>Alpena</i>	Call: 989.354.9560 Email: <a href="mailto:equalizationoffice@alpenacounty.org"><u>equalizationoffice@alpenacounty.org</u></a>
<a href="#"><u>Antrim</u></a>	Google 'Antrim County GIS' Click on the first link 'GIS - Antrim County' Click 'GIS Map' Use search bar for parcels
<a href="#"><u>Arenac</u></a>	Google 'Arenac County GIS' Click on the first link 'Arenac County GIS' Use search bar for parcels
<a href="#"><u>Baraga</u></a>	See <a href="#"><u>Colligo</u></a> instructions
<a href="#"><u>Barry</u></a>	See <a href="#"><u>FetchGIS</u></a> instructions
<a href="#"><u>Bay</u></a>	See <a href="#"><u>FetchGIS</u></a> instructions
<a href="#"><u>Benzie</u></a>	Google 'Benzie County GIS' Click on the first link 'Benzie County Maps - LIAA' Click 'County Base Map' * Note: Must allow popups to access maps
<a href="#"><u>Berrien</u></a>	Google 'Berrien County GIS' Click on the first link 'Geographical Information Systems (GIS)   Berrien County, MI' Click 'Interactive Mapping Site' Click Agree
<i>Branch</i>	Call: 517.279.4312
<a href="#"><u>Calhoun</u></a>	Google 'Calhoun County GIS' Click on the first link 'Calhoun County   GIS' Choose desired map
<i>Cass</i>	Call: 269.445.4432 Email: <a href="mailto:gis@cassco.org"><u>gis@cassco.org</u></a>



# GIS Info by County

<a href="#"><u>Charlevoix</u></a>	Google 'Charlevoix County GIS' Click on the first link 'Parcel Search Mapping – Charlevoix County' Click 'ADVANCED MAP'
<a href="#"><u>Cheboygan</u></a>	Google 'Cheboygan County GIS' Click on the first link 'GIS Cheboygan County Michigan' Click on either hyperlink, 'Cheboygan County mapping website' or 'County On-line Mapping services' Choose desired map
<a href="#"><u>Chippewa</u></a>	Google 'Chippewa County MI GIS' Click on the first link 'Chippewa county Michigan' Scroll down to 'GIS Online Map' Click 'Accept'
<a href="#"><u>Clare</u></a>	See <a href="#"><u>FetchGIS</u></a> instructions
<a href="#"><u>Clinton</u></a>	See <a href="#"><u>FetchGIS</u></a> instructions
<a href="#"><u>Crawford</u></a>	Call: 989.344.3275
<a href="#"><u>Delta</u></a>	See <a href="#"><u>FetchGIS</u></a> instructions
<a href="#"><u>Dickinson</u></a>	See <a href="#"><u>Colligo</u></a> instructions
<a href="#"><u>Eaton</u></a>	Google 'Eaton County GIS' Click on the first link 'Eaton County GIS' Click 'Launch' under Parcel Viewer tab
<a href="#"><u>Emmet</u></a>	Google 'Emmet County GIS' Click on the first link 'Interactive Mapping – Emmet County' Click 'ACCESS GIS PROPERTY VIEWER HERE' Click 'OK'
<a href="#"><u>Genesee</u></a>	See <a href="#"><u>FetchGIS</u></a> instructions
<a href="#"><u>Gladwin</u></a>	See <a href="#"><u>FetchGIS</u></a> instructions
<a href="#"><u>Gogebic</u></a>	See <a href="#"><u>Colligo</u></a> instructions
<a href="#"><u>Grand Traverse</u></a>	Google 'Grand Traverse County GIS' Click on the first link 'Geographic Information Systems (GIS) - Grand Traverse County' Click 'GIS & Maps' Choose desired map
<a href="#"><u>Gratiot</u></a>	See <a href="#"><u>FetchGIS</u></a> instructions
<a href="#"><u>Hillsdale</u></a>	Google 'Hillsdale County GIS' Click on the first link 'Hillsdale County GIS' Click 'I agree to the Terms of Use/Sign me in as a guest'
<a href="#"><u>Houghton</u></a>	Call: 906.482.0250 Email: <a href="mailto:equalization@houghtoncounty.net">equalization@houghtoncounty.net</a> <a href="mailto:jaikob@houghtoncounty.net">jaikob@houghtoncounty.net</a>
<a href="#"><u>Huron</u></a>	See <a href="#"><u>FetchGIS</u></a> instructions
<a href="#"><u>Ingham</u></a>	Google 'Ingham County GIS'



# GIS Info by County

	Click on the first link 'Ingham County Equalization Tax Mapping Viewer' Click 'Start the Viewer'
<a href="#"><u>Ionia</u></a>	Google 'Ionia County GIS' Click on the first link 'Online Services – Ionia County' Click 'Ionia County Tax Parcel Viewer' Click 'OK'
<a href="#"><u>Iosco</u></a>	Google 'Iosco County GIS' Click on the first link 'Welcome to IOSCO – Maps/GIS'
<a href="#"><u>Iron</u></a>	Google 'Iron County Michigan GIS' Click on this first link 'GIS Mapping – Iron River Township Michigan'
<a href="#"><u>Isabella</u></a>	See <a href="#"><u>FetchGIS</u></a> instructions
<a href="#"><u>Jackson</u></a>	Google 'Jackson County GIS' Click on the first link 'GIS APPS – Jackson County, MI' Click 'VIEW THE INTERACTIVE MAP' Choose desired map
<a href="#"><u>Kalamazoo</u></a>	Google 'Kalamazoo County GIS' Click on the first link 'Kalamazoo County has a new GIS online mapping website!' Click 'Continue to NEW mapping'
<a href="#"><u>Kalkaska</u></a>	See <a href="#"><u>Colligo</u></a> instructions
<a href="#"><u>Kent</u></a>	Google 'Kent County GIS' Click on the first link 'Kent County Public Viewer' Click 'Accept'
<a href="#"><u>Keweenaw</u></a>	See <a href="#"><u>Colligo</u></a> instructions
<a href="#"><u>Lake</u></a>	Google 'Lake County Michigan GIS' Click on the first link 'Lake County-Michigan > Courthouse > Equalization' Click 'Lake County GIS Map' Check terms and conditions box and click 'OK'
<i>Lapeer</i>	Email: <a href="mailto:Treasurer@lapeercounty.org">Treasurer@lapeercounty.org</a>  **Available for a fee (all prices subject to change without notice)
<a href="#"><u>Leelanau</u></a>	Google 'Leelanau County GIS' Click on the first link 'Leelanau County   GIS' Choose desired map
<i>Lenawee</i>	Call: 517.263.4695 Email: <a href="mailto:dereck.wilt@lenawee.mi.us">dereck.wilt@lenawee.mi.us</a>
<a href="#"><u>Livingston</u></a>	Google 'Livingston County GIS' Click on the first link 'Geographic Information Systems – Livingston County' Click 'Use our Interactive GIS Viewer' Click 'Interactive GIS (Parcel) Viewer'
<a href="#"><u>Luce</u></a>	Google 'Luce County GIS' Click on the first link 'Luce County – Section Maps' Choose desired map
<a href="#"><u>Mackinac</u></a>	See <a href="#"><u>FetchGIS</u></a> instructions
<a href="#"><u>Macomb</u></a>	Google 'Macomb County GIS' Click on the first link 'Macomb County GIS' Click 'Click Here' under Property Information



# GIS Info by County

	Click 'Parcel Explorer v1.2'
<a href="#"><u>Manistee</u></a>	Google 'Manistee County GIS' Click on the first link 'Manistee County - LIAA' <b>**Parcel search</b>
<a href="#"><u>Marquette</u></a>	See <a href="#"><u>FetchGIS</u></a> instructions
<a href="#"><u>Mason</u></a>	N/A
<a href="#"><u>Mecosta</u></a>	See <a href="#"><u>FetchGIS</u></a> instructions
<a href="#"><u>Menominee</u></a>	See <a href="#"><u>Colligo</u></a> instructions
<a href="#"><u>Midland</u></a>	Google 'Midland County GIS' Click on the first link 'County of Midland, Michigan > GIS' Click 'Open Data Portal' Click 'Parcel Boundaries' Click 'Land Information'
<a href="#"><u>Missaukee</u></a>	Google 'Missaukee County GIS' Click on the first link 'Equalization - Welcome to Missaukee County, MI' Click 'Missaukee County GIS'
<a href="#"><u>Monroe</u></a>	Google 'Monroe County GIS' Click on the first link 'Geographic Information Systems (GIS)' Click 'Monroe County Property Data Exchange' Click 'Ok'
<a href="#"><u>Montcalm</u></a>	Google 'Montcalm County GIS' Click on the first link 'Maps - Montcalm County' Click 'Montcalm County Parcel Viewer' Check terms and conditions box and click 'Ok'
<a href="#"><u>Montmorency</u></a>	Call: 989.785.8046 Email: <a href="mailto:equalization.montmorencycounty@gmail.com"><u>equalization.montmorencycounty@gmail.com</u></a>
<a href="#"><u>Muskegon</u></a>	Google 'Muskegon County GIS' Click on the first link 'Muskegon County Property Information Viewer' Check terms and conditions box and click 'Ok'
<a href="#"><u>Newaygo</u></a>	Google 'Newaygo County GIS' Click on the first link 'GIS - GIS – Newaygo County' Click 'County Map Viewer' Check terms and conditions box and click 'Ok'
<a href="#"><u>Oakland</u></a>	Google 'Oakland County GIS' Click on the first link 'Property Gateway v. 7.4 - Oakland County, Michigan'
<a href="#"><u>Oceana</u></a>	Google 'Oceana County GIS' Click on the first link 'GIS Interactive Map – Oceana County Michigan'
<a href="#"><u>Ogemaw</u></a>	Google 'Ogemaw County GIS' Click on the first link 'Geographic Information System – Ogemaw County' Click 'GIS Search' In dropdown choose Ogemaw Click 'Ok'
<a href="#"><u>Ontonagon</u></a>	See <a href="#"><u>Colligo</u></a> instructions
<a href="#"><u>Osceola</u></a>	Call: 231.832.6119 Email: <a href="mailto:equal@osceolacountymi.com"><u>equal@osceolacountymi.com</u></a>
<a href="#"><u>Oscoda</u></a>	Google 'Oscoda County GIS'



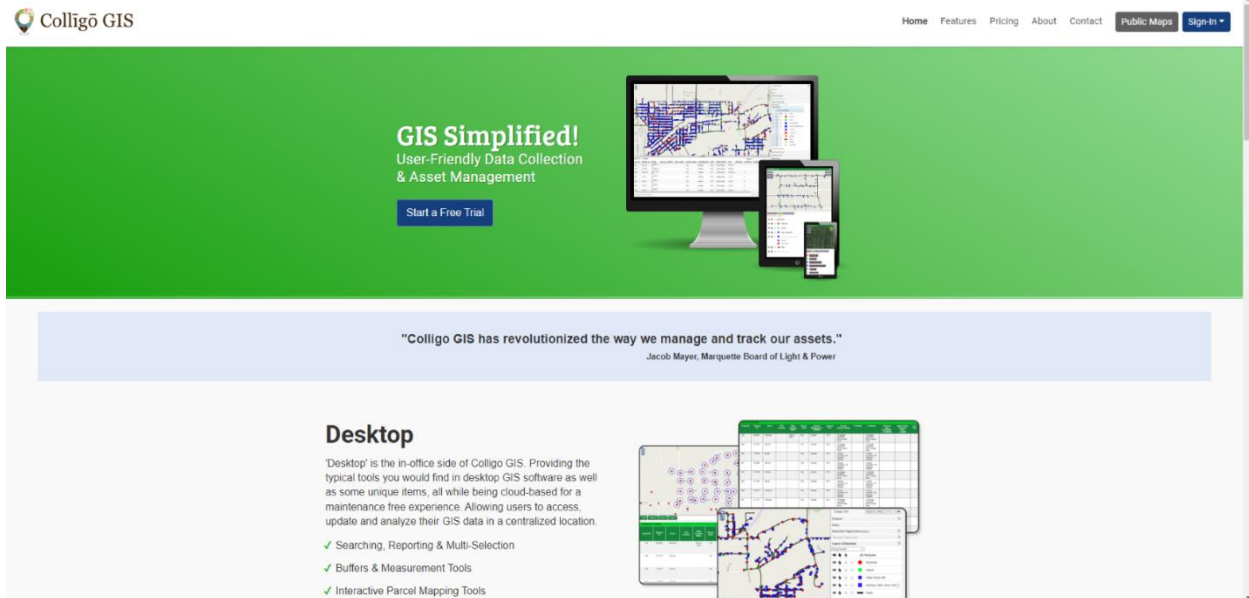
# GIS Info by County

	<p>Click on the first link 'GIS &amp; Mapping – Oscoda County'</p> <p>Click 'Equalization'</p> <p>Under the Links tab click 'Oscoda County Beacon GIS Map'</p>
<a href="#"><u>Otsego</u></a>	See <a href="#">FetchGIS</a> instructions
<a href="#"><u>Ottawa</u></a>	<p>Google 'Ottawa County GIS'</p> <p>Click on the first link 'Property Mapping 4.14 - Ottawa County GIS'</p>
<a href="#"><u>Presque Isle</u></a>	<p>Call: 989.734.3810</p> <p>Email: <a href="mailto:picoequal@picounty.org">picoequal@picounty.org</a></p>
<a href="#"><u>Roscommon</u></a>	<p>Google 'Roscommon County GIS'</p> <p>Click on the first link 'Online Services and Public Notices   Roscommon County, MI'</p> <p>Under 'Online Map' click 'Click this link to go to Roscommon County online map service featuring parcels, trails, services, and much more.'</p>
<a href="#"><u>Saginaw</u></a>	See <a href="#">FetchGIS</a> instructions
<a href="#"><u>St. Clair</u></a>	<p>Google 'St. Clair County GIS'</p> <p>Click on the first link 'GIS - The Offices of St. Clair County'</p> <p>Click 'Parcel Viewer/Geocortex Tax Parcel Mapping'</p>
<a href="#"><u>St. Joseph</u></a>	See <a href="#">FetchGIS</a> instructions
<a href="#"><u>Sanilac</u></a>	See <a href="#">FetchGIS</a> instructions
<a href="#"><u>Schoolcraft</u></a>	See <a href="#">FetchGIS</a> instructions
<a href="#"><u>Shiawassee</u></a>	See <a href="#">FetchGIS</a> instructions
<a href="#"><u>Tuscola</u></a>	<p>Google 'Tuscola County GIS'</p> <p>Click on the first link 'GIS - Tuscola County'</p> <p>Click 'GIS Data Policy County/Township/City'</p> <p><b>**required online form</b></p>
<a href="#"><u>Van Buren</u></a>	<p>Google 'Van Buren County GIS'</p> <p>Click on the first link 'Maps &amp; Geographic Information Services (GIS)'</p> <p>Click on '<a href="https://maps.vanburencountymi.gov/">https://maps.vanburencountymi.gov/</a>'</p> <p>Click 'Proceed to Site'</p> <p>Click 'Maps and GIS &gt; Interactive Maps'</p> <p>Choose desired map under 'Land Ownership'</p>
<a href="#"><u>Washtenaw</u></a>	<p>Google 'Washtenaw County GIS'</p> <p>Click on the first link 'MapWashtenaw   Washtenaw County, MI'</p> <p>Click 'I agree to these terms. Launch the MapWashtenaw view'</p> <p>Click 'Proceed to Site'</p>
<a href="#"><u>Wayne</u></a>	<p>Google 'Wayne County GIS'</p> <p>Click on the first link 'GIS Resources   Information Technology – Wayne County'</p> <p>Click 'Interactive Maps'</p> <p>Choose desired map</p>
<a href="#"><u>Wexford</u></a>	<p>Google 'Wexford County GIS'</p> <p>Click on the first link 'Interactive GIS Maps   Wexford County Michigan'</p> <p>Click 'Click here to visit our Interactive GIS Maps page'</p> <p>Click 'standard maps' hyperlink</p> <p>Choose desired map</p>

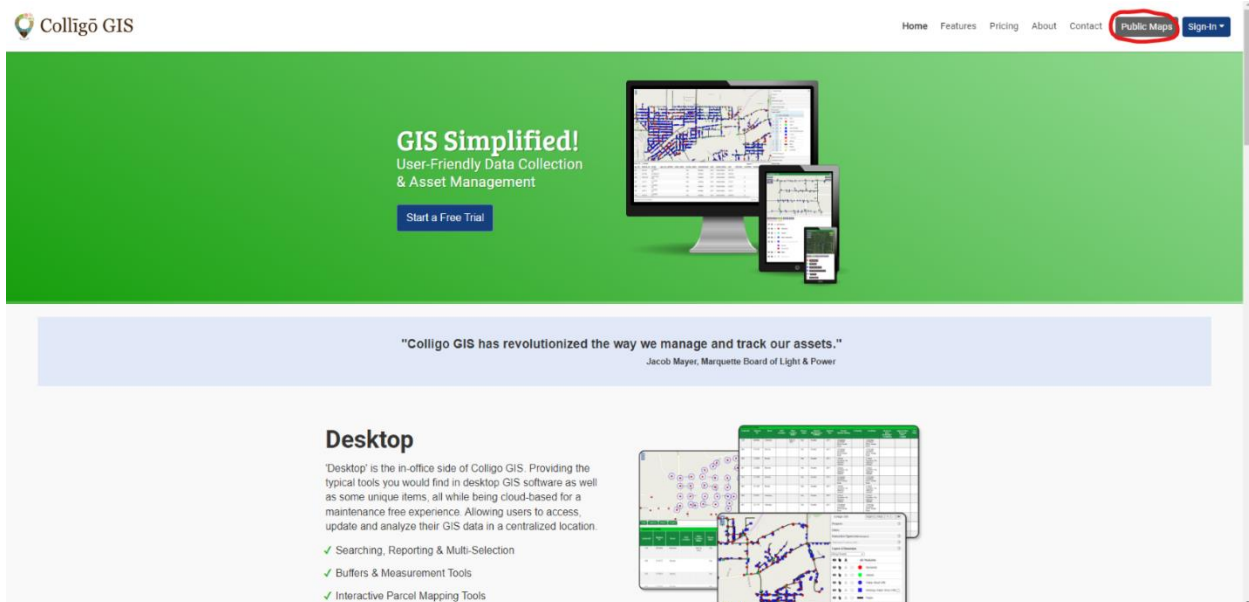
## Colligo

**Step 1.** Access Colligo homepage (<https://colligogis.com/>)

\*Skip to Step 4 if you already have access to desired GIS map for your county



**Step 2.** Click 'Public Maps' in upper right corner of Colligo's homepage



## Step 3. Choose desired county

### Welcome to Colligo GIS: Desktop

Here is a list of public sites you may visit  
(Chrome or Firefox preferred):

- [Alger County, MI](#)
- [Baraga County, MI](#)
- [City of Munising, MI](#)
- [Crawford County, MI](#)
- [Dickinson County, MI](#)
- [Gogebic County, MI](#)
- [Houghton County, MI](#)
- [Kalkaska County, MI](#)
- [Keweenaw County, MI](#)
- [Menominee County, MI](#)
- [Ontonagon County, MI](#)

Questions? Check out the [Colligo GIS User's Guide](#).



## Step 4. Click 'Agree to Continue'

### Welcome to Colligo GIS: Desktop

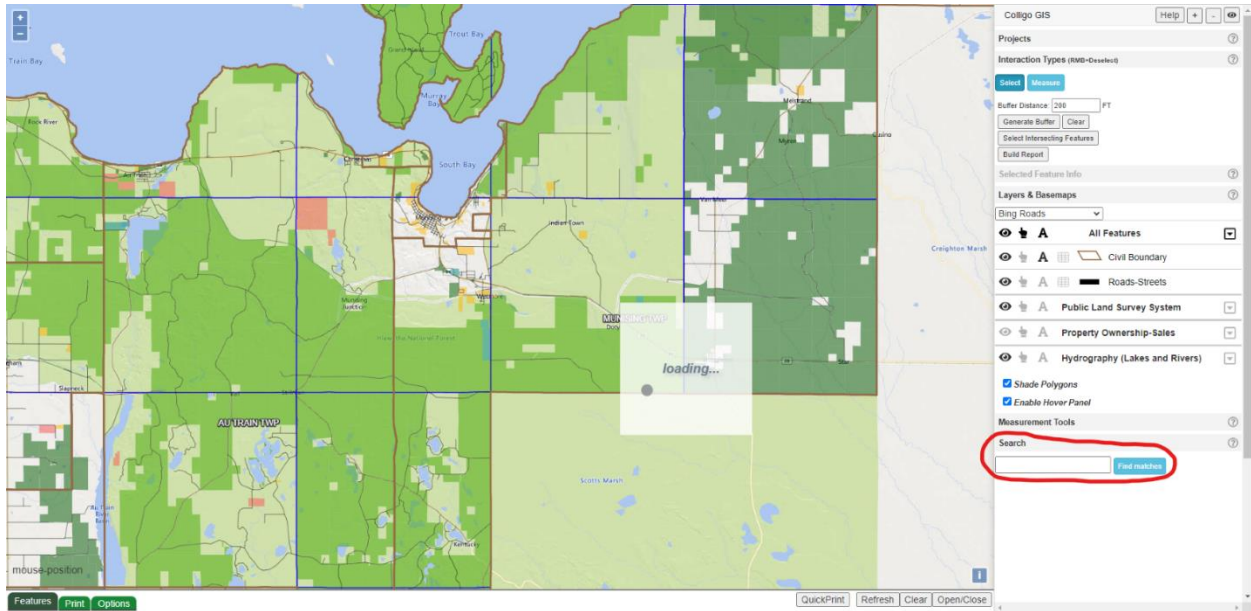
The GIS site is intended to be a general guide to property and land information, and does not represent a survey of real property nor should it be used or referenced to for conveyance of real property, guaranteeing title or making official determinations. Contact the appropriate County Department to obtain original source documents or for official determinations. This information has been developed from various sources and although efforts have been made to ensure accuracy and reliability; errors, omissions and variable conditions originating from compilation and sources used to develop the information may be reflected herein. In addition, land information is constantly changing and the most current or accurate data might not be represented. The information accessible through this site is represented "as is" without warranty of any kind, either expressed or implied, or statutory, including, but not limited to, the implied warranties or merchantability and fitness for a particular purpose. No guarantee is granted nor is any responsibility for reliance assumed. The user assumes the entire risk as to the quality, use and reliability of the entire information. The County does not accept any liability for damages or misrepresentation of any kind caused by inaccuracies in the information and in no event shall the County, it's elected or appointed officials or employees be liable for direct, indirect, incidental, consequential or special damages of any kind. By accessing and using this application you hereby understand and accept the terms of the above disclaimer.

[Agree to Continue](#)

Have questions? Check out the [Colligo GIS User's Guide](#).



**Step 5.** Navigate to Search bar in the lower left corner of the screen to input a single address and click 'Find matches'



**Step 6.** A 'Parcels' clickable text will appear underneath the search bar after searching for an address as well as a number of matches. Click on 'Parcels' to bring up the Parcels menu at the bottom of the screen.

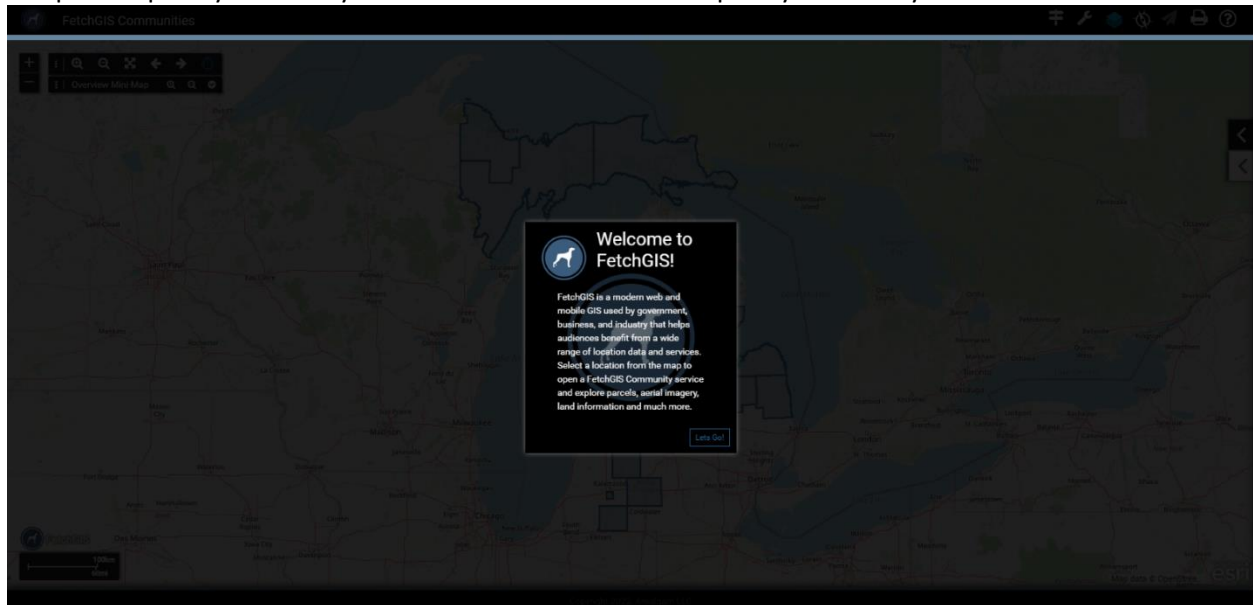
FeatureID	Parcel Number	Owner Name	Owner Address	Owner CSZ	Property Address	Property Description	Assessed Value	Land Value	Total Acres	Land Frontage	Land Depth	Property Class	Principal Residence %	Assessed Value S	Taxable Value S
4237	003-076-001-00	RAMSEY WILLIAM M	325 E SUPERIOR ST	MUNISING, MI 49862		SEC 26 T47N R19W FRL W 1/2 OF SW 14 BEG AT PT ON W1/2 S...	27400					402	0	27400.00	5406.00
4238	003-076-001-00	RAMSEY WILLIAM M	325 E SUPERIOR ST	MUNISING, MI 49862		SEC 26 T47N R19W FRL W 1/2 OF SW 14 BEG AT PT ON W1/2 S...	27400					402	0	27400.00	5406.00
4243	003-076-005-00	POSSUM HOLLAR INC	325 E SUPERIOR ST	MUNISING, MI 49862		SEC 26 T47N R19W 3.08 APT OF FRL SEC 26 BEG 33 ELY OF CL OF OLD M...	34300					402	0	34300.00	18854.00



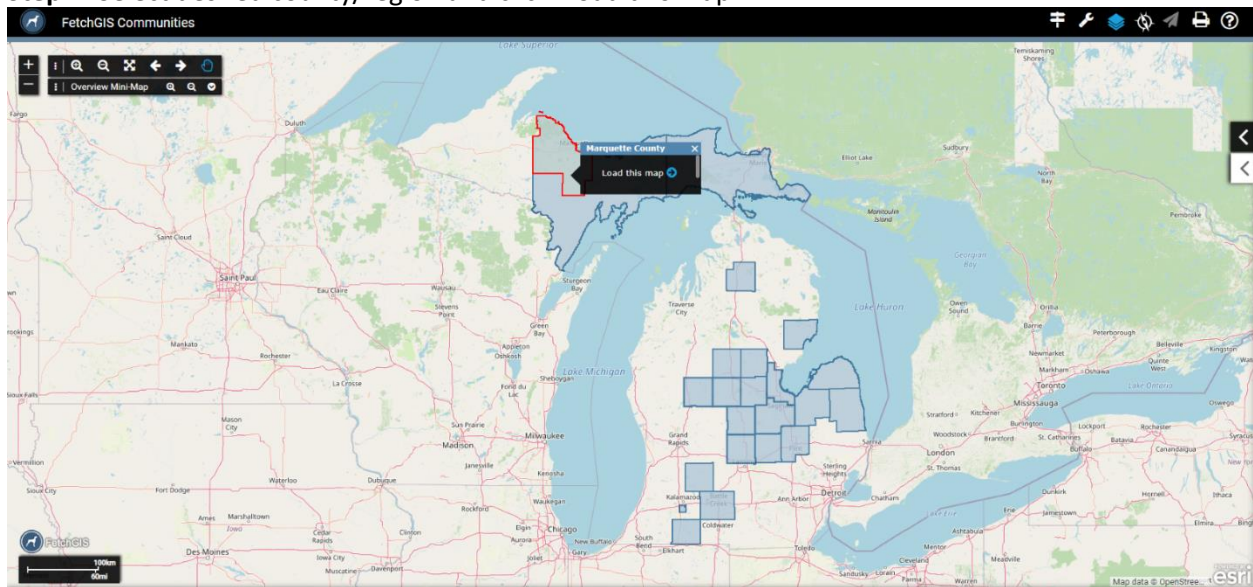
## FetchGIS

**Step 1.** Access FetchGIS homepage (<https://app.fetchgis.com>) and click 'Let's Go' found in the pop-up box

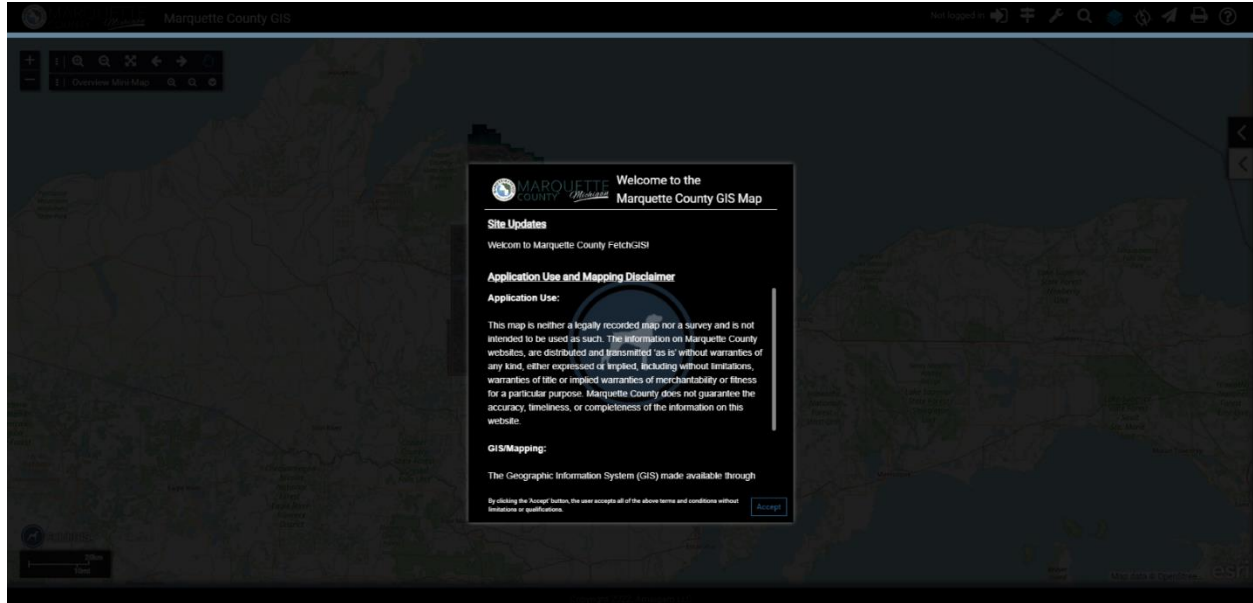
\*Skip to Step 3 if you already have access to desired GIS map for your county



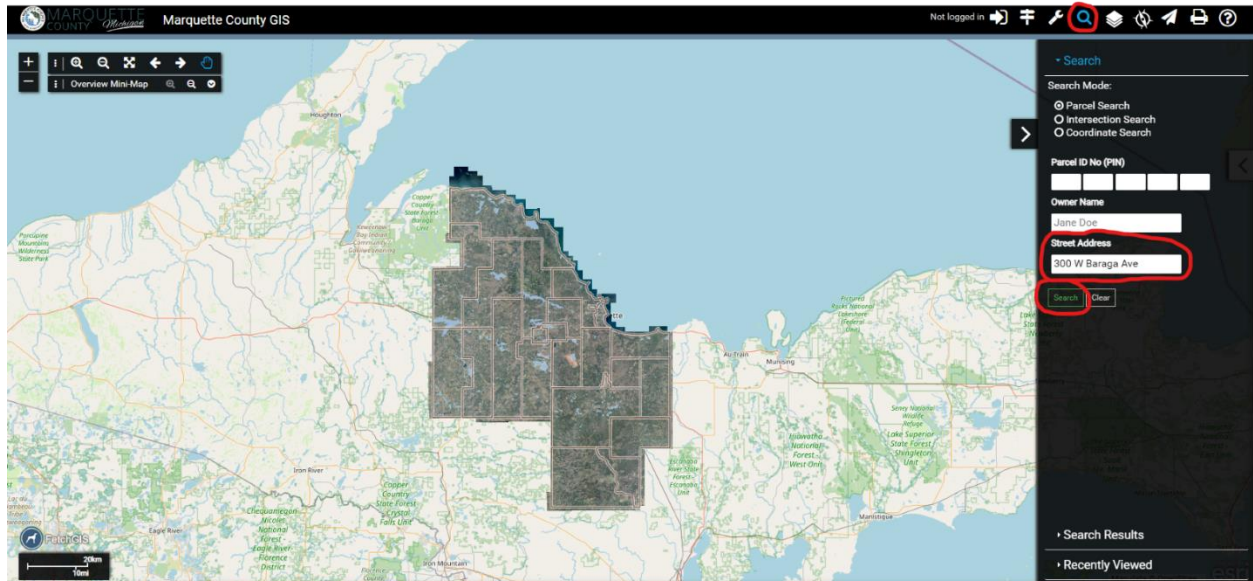
**Step 2.** Select desired county/region and click 'Load this map'



**Step 3.** Click 'Accept'



**Step 4.** In the upper right-hand corner, click on the magnifying glass to pull up the search menu. Type your address in the Street Address view and click 'Search'



**Step 5.** A 'Search Results' page will pop up under previous search menu, click on desired result for parcel information

\*Parcels information may require payment



# GIS Info by County

The screenshot displays the Marquette County GIS web application. The main map area shows a satellite-style view of Marquette County, Michigan, with various roads and geographical features. A search panel on the right side of the screen is active, showing search results for a query. The search results are as follows:

Address
5242-098-7150 CITY OF MARQUETTE 300 W BARAGA AVE, MARQUETTE
5242-098-702-91 SPENCER INC 300 W BARAGA AVE, MARQUETTE
5242-098-718-99 DIXON INC 300 W BARAGA AVE, MARQUETTE

Below the search results, there is a section for 'Recently Viewed' which is currently empty. The top of the application shows the 'Marquette County GIS' title and a 'Not logged in' status. The bottom of the application includes a scale bar and a north arrow.